

The background of the slide is a photograph of an industrial factory floor. It features several white NACHI robotic arms, which are used for automated manufacturing tasks. The arms are positioned in various orientations, some reaching towards the camera and others further back. The environment is filled with industrial equipment, including conveyor belts and structural frames. A large, semi-transparent yellow diagonal overlay covers the right side of the image, providing a background for the text.

# Thailand : Investment Opportunity for Automation & Robotics

**Ms. Paveena Suwannasup**

Professional Level, Investment Promotion Division 2 Thailand  
Board of Investment (BOI)

27th June 2024

01 Introducing to the BOI

02 Sector of Opportunities



**03 BOI Related-Activities**

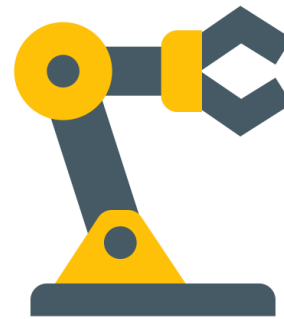
04 Our Services

# Investment Promotion for Automation and Robotics Industry

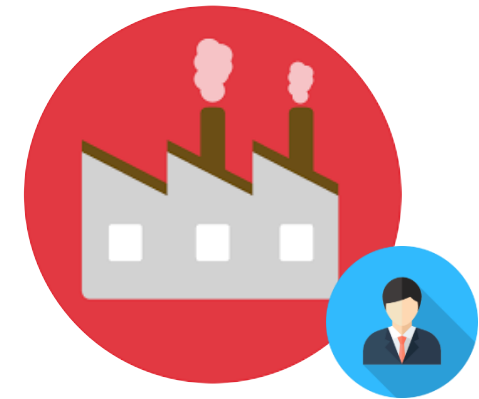
BOI promotes all of Machinery, robot & automation suppliers and users.



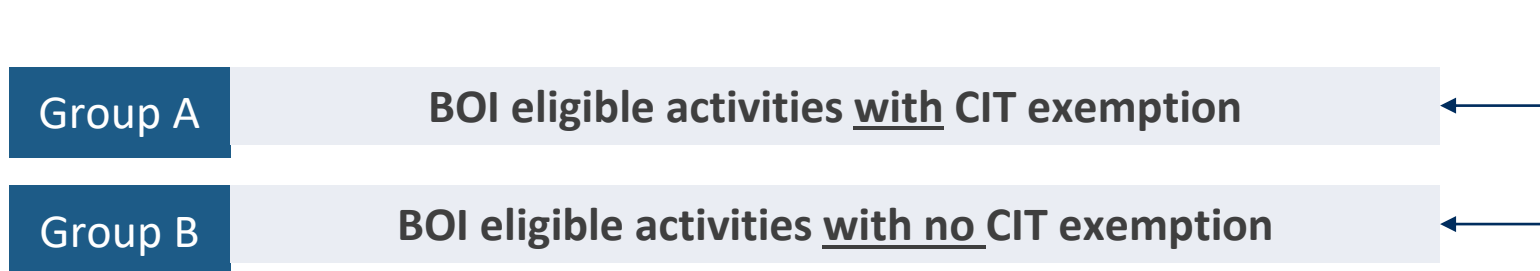
Support Supply Side



Robot & Automation

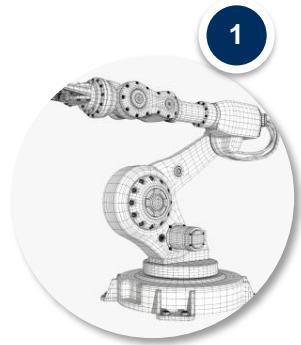


Encourage Demand Side





# Investment Promotion in Robot and Automation - **Supply Side**



**Design**



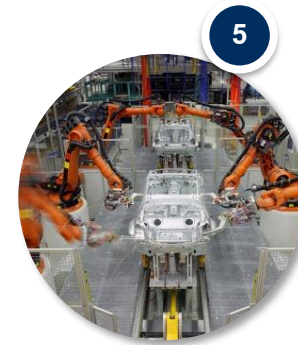
**Control System  
Design**



**Procurement/  
Making Parts**



**Assembly**



**Installation &  
Commissioning**

**Manufacture of automation machinery / automation equipment with engineering design including Automation System Integration Design and Control System Design)**

- 1. Manufacture of automation machinery / automation equipment with engineering design including Control System Design**
- 2. Manufacture of high-precision machinery or parts**

**Assemble of robots or automation equipment or parts**

# Manufacture of Machine and Automation System Industries

## CONDITION

### 3.1.1 Manufacture of automation machinery and/or automation equipment with engineering design

#### 3.1.1.1 Manufacture of automation machinery and/or automation equipment with engineering design, including automation system integration and control system configuration

1. The product must be a system or machine that is fully automated and can perform at least two tasks at once continuously and collectively.
2. Project must have the following operations:
  - 2.1 Design and development of automation system integration
  - 2.2 Design of the operational control system configuration by the integrated automation system
  - 2.3 Engineering design of machinery, equipment and parts

## INCENTIVE

A1

8  
years

Exemption  
CIT  
(with no cap)



Exemption  
CIT



Exemption  
Import duties on  
raw materials  
Used in R&D



Exemption  
Import duties  
on machinery



Exemption  
Import duties on  
raw materials



Non-tax  
incentives

INCENTIVES

# Manufacture of Machine and Automation System Industries

## CONDITION

**3.1.1 Manufacture of automation machinery and/or automation equipment with engineering design**

**3.1.1.2 Manufacture of automation machinery and/or automation equipment with engineering design, including control system configuration**

Project must have the following operations:

1. *Design of the operational control system configuration by the automation system integrated*
2. *Engineering design of machinery, equipment and parts*

## INCENTIVE

**A2**

**8  
years**

**Exemption  
CIT  
(with cap)**



**Exemption  
CIT**



**Exemption  
Import duties on  
raw materials  
Used in R&D**



**Exemption  
Import duties  
on machinery**



**Exemption  
Import duties on  
raw materials**



**Non-tax  
incentives**

**INCENTIVES**

# Manufacture of Machine and Automation System Industries

## CONDITION

### 3.1.2 Manufacture of machinery, equipment and parts and/or repair of mould and die

Project must have the forming process of parts that serve in the main function of the manufactured machinery and/or the engineering design.

### 3.1.3 Assembling of machinery and/or machinery equipment

Project must have assembling process as approved by the Board.

### 3.1.4 Assembling of robots or automation equipment and/or automation parts

Project must have assembling process as approved by the Board.

## INCENTIVE

**A3**  
5  
years

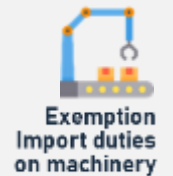
CIT Exemption  
(with cap)

**A4**  
3  
years

CIT Exemption  
(with cap)

**A3**  
5  
years

CIT Exemption  
(with cap)



INCENTIVES

# Manufacture of Machine and Automation System Industries

## CONDITION

### 3.1.5 Manufacture of high-precision machinery, including equipment and parts of the machinery, and machinery repair

#### 3.1.5.1 Manufacture of high-precision machinery

1. Project must have part forming process and/or assembling process as approved by the Board.
2. Project must have one of the following features:
  - 2.1 Product must be machinery that applies technology machinery in the manufacturing of electronics products such as integrated circuit (IC), semiconductor or microelectromechanical systems (MEMS)
  - 2.2 Product must be capable of setting the production tolerance not more than IT5, according to the International Tolerance Grades (IT)

## INCENTIVE

A2

8  
years

Exemption  
CIT  
(with cap)



Exemption  
CIT



Exemption  
Import duties on  
raw materials  
Used in R&D



Exemption  
Import duties  
on machinery



Exemption  
Import duties on  
raw materials



Non-tax  
incentives

INCENTIVES



# Manufacture of Machine and Automation System Industries

## CONDITION

### 3.1.5 Manufacture of high-precision machinery, including equipment and parts of the machinery, and machinery repair

#### 3.1.5.2 Manufacture of equipment and parts for high-precision machinery

1. Project must have part forming process and/or assembling process as approved by the Board.
2. Project must have one of the following features:
  - 2.1 Product *must be equipment or parts that serve in the main function of the machinery according to the Activity 3.1.5.1*
  - 2.2 The main machinery used in the project must be able to produce workpieces with a tolerance value not exceeding IT5, according to the International Tolerance Grades (IT)

## INCENTIVE

A2

8  
years

Exemption  
CIT  
(with cap)



Exemption  
CIT



Exemption  
Import duties on  
raw materials  
Used in R&D



Exemption  
Import duties  
on machinery



Exemption  
Import duties on  
raw materials



Non-tax  
incentives

INCENTIVES

# Manufacture of Machine and Automation System Industries

## CONDITION

### 3.1.5 Manufacture of high-precision machinery, including equipment and parts of the machinery, and machinery repair

#### 3.1.5.3 Repair of high-precision machinery

1. Project must repair key parts that directly serve in the main function of high precision machinery.
2. Project must have expenses on salary for repairing personnel of at least 1,500,000 baht per year and it must be new employment, or capital investment (excluding cost of land and working capital) of at least 1 million baht.

## INCENTIVE

**A3**

**5  
years**

**Exemption  
CIT**

**(with no cap)**



**Exemption  
CIT**



**Exemption  
Import duties on  
raw materials  
Used in R&D**



**Exemption  
Import duties  
on machinery**



**Exemption  
Import duties on  
raw materials**



**Non-tax  
incentives**

**INCENTIVES**

# Investment Promotion for Users (Group A)- Enhancing Productivity



Automation and Robotics



## Group A

**Users (Demand Side)** - BOI eligible activities with CIT exemption

Example: Manufacturing of food, automotive parts, or electrical appliance and electronics parts \*

### Improve Existing Production Line / Services

**Automation System**  
CIT exemption for 3 years

Applied to the entire production line/service or certain processes such as Automated Production Cell (excluding individual machinery use)

CIT exemption cap 50% of the investment amount in automation system

#### Domestic Industry Linkage

(Purchased from the domestic manufacturers of more than 30% of the investment amount in automation system)

Exempted financial amount is adjusted to be 100% of the investment amount in automation.

**Other types of improvement**  
CIT exemption for 3 years



CIT exemption cap 50% of the investment amount in machinery



\* If existing projects are BOI promoted, the CIT exemption and/or reduction must expire.

01 Introducing to the BOI

02 Sector of Opportunities



03 BOI Related-Activities

**04 Our Services**

# One Start **One Stop** Investment Center **(OSOS)**

- **Comprehensive information** and advice on establishing operation in Thailand
  - **1-Stop for visas & work permits** in 3 hours
  - **Easing & speeding** procedures for new investors

## Contact us:



18<sup>th</sup> Floor, Chamchuri Square Building, 319  
Phayathai Rd., Pathumwan, Bangkok  
10330, Thailand



Tel: 66(0)2 209 1100



Email: [osos@boi.go.th](mailto:osos@boi.go.th)

- **Database** of useful contacts: public & private organizations
  - Other applications for investors

For more info

**CLICK**



**More Convenience**  
**More Efficiency**  
**Less Time**



# Where to contact BOI ?

## BOI Overseas Offices



### BOI Headquarters

555 Vibhavadi-Rangsit Rd.  
Chatuchak, Bangkok 10900 Thailand  
Tel: (66 2) 537- 8111  
Fax: (66 2) 537-8098  
E-mail: [head@boi.go.th](mailto:head@boi.go.th)

### BOI Paris Office

Office of the Economic Counsellor (Investment)  
Royal Thai Embassy  
8 rue Greuze, 75116, Paris, France  
E-mail: [par@boi.go.th](mailto:par@boi.go.th)



Getting to Know BOI



Investment Promotion Guide

